

## Talks and Presentations

We run our annual series of Thursday evening presentations once a month, from October to April. The talks are open to all and the admission charge is £4. The Hall is accessible and there is a hearing loop system installed. Teas and coffees are served.



### This winter's talks programme :

11 Oct 2018	Craigievar Castle - Jim Fiddes
8 Nov 2018	Adventures in Archives - Prof. Marjory Harper
13 Dec 2018	The Aberdeen Bestiary - Prof. Jane Geddes
10 Jan 2019	The Deeside Railway Line - Mike Cooper
14 Feb 2019	The Shieling System in Scotland - Fred Gordon
14 Mar 2019	Gospel Singing in the NE. - Dr. Francis Wilkins
11 Apr 2019	Mesolithic Deeside - Ali Cameron

More details are available at:

[www.cromarhistorygroup.org.uk](http://www.cromarhistorygroup.org.uk)



The Howe of Cromar

## Publications

### *Cromar History Group's Echoes From Cromar's Past*

*Echoes From Cromar's Past* is a 50+ page annual publication full of stories and articles about the characters and events in Cromar. It is published around Christmas time every year.

All our publications can be printed on demand or offered in PDF format.

## Members' Meetings

Throughout the winter we run a series of meetings on various local history topics. These are restricted to members only. The smaller group size gives more opportunity for discussion and participation in the topic and a better chance to look at some of the objects or documents on display. Dates for the meetings are circulated to members by e-mail.

## Members' Excursions

Visits to places of historical and archaeological interest are a regular part of the Group's summer activities. Recent trips have included guided walks to Midmar, Portsoy Salmon Bothy, Garioch Heritage Centre and Glen Girnock.



## Archaeology

Cromar History Group members have been actively involved with the excavations in recent years in Cromar including Tomnaverie, Waulkmill, Hillhead, and Old Kinord. Several of our members have been sufficiently inspired to seek academic qualifications in archaeology at Aberdeen University.



Excavations at Waulkmill, Tarland in 2012

## MEMBERSHIP APPLICATION



Name(s).....

Address .....

.....

.....

Post Code.....

Phone No.....

E-Mail.....

We use your personal details to contact you about events and to administer the membership of the Group. They will not be shared with others. Your details will be deleted when you cease to be a member.

The annual membership fee is £10.00

Please return this form, with a cheque made out to Cromar History Group,

to:

Lesley Ellis

Reekitlane, Coull

Tarland, Aboyne

AB34 4TR

## The Cromar Archive



*Pupils at Kinord School 1925*

The Cromar History Group holds a large collection of documents, pictures and artefacts donated to us over the years. Over the past few years, we have been recording them on a database. They mainly relate to the Howe of Cromar with its main communities of Tarland, Logie Coldstone, Coull, Ordie and Migvie. We do not hold archive items for other communities on Deeside or Donside.

### You can search the archive online at any time:

[www.cromarhistorygroup.org.uk/archives/](http://www.cromarhistorygroup.org.uk/archives/)

The database currently contains over 2000 images. It is constantly being updated and will always be a work in progress.

### CONTACT US

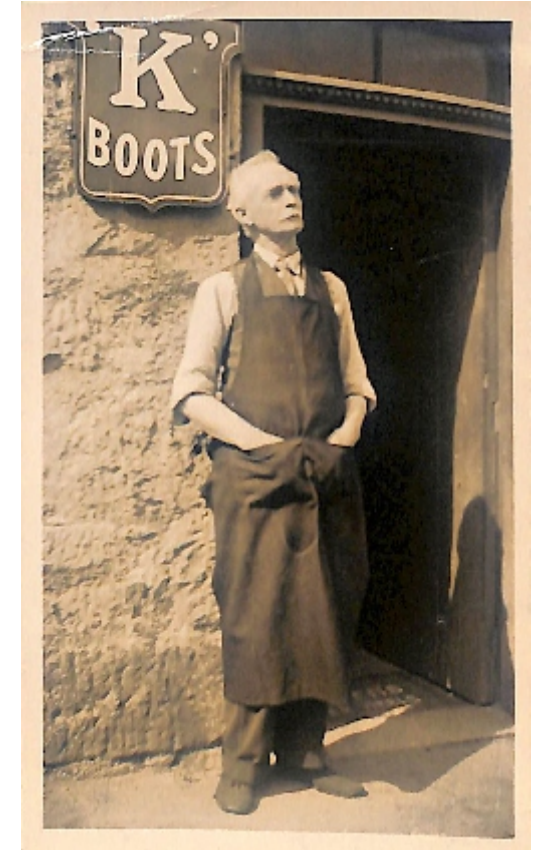
We have our own website :

[www.cromarhistorygroup.org.uk](http://www.cromarhistorygroup.org.uk)

You can contact us by email at:

[info@cromarhistorygroup.org.uk](mailto:info@cromarhistorygroup.org.uk)

You can contact us by phone: 013398 81651 (Veronica Ross)



Alex Innes, shoemaker outside his shop in Tarland, 1920s

**Cromar History Group** is a lively group of people with a common interest in learning about, preserving and promoting the history and heritage of our local area. It is our aim to share what we learn and make it accessible to everyone who might want to know more about Cromar's fascinating past.

[www.cromarhistorygroup.org.uk](http://www.cromarhistorygroup.org.uk)